



WEH[®] CNG FUELLING SOLUTIONS

Products for safe and easy CNG vehicle refuelling



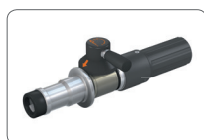
» WEH® CNG Fuelling Products

Nozzles, Receptacles, Breakaways, Check Valves, Filters, Accessories

WEH offers a wide range of certified products for safe and easy CNG vehicle refuelling:



TK17 CNG



TK16 CNG



TK10 CNG



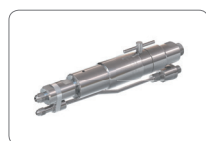
TK4 CNG



TK4i CNG



TK1 CNG



TSA1 CNG



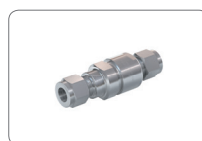
TSA2 CNG



TN1 CNG



TS50 CNG



TVR1 CNG



TSF2 CNG
Coalescing Filter



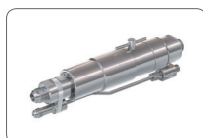
TK26 CNG



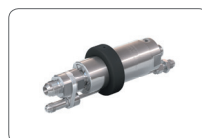
TK22 CNG



TK24 CNG



TSA5 CNG



TSA6 CNG



TN5 CNG



TS55 CNG



TVR5 CNG



TSF4 CNG



TK6 CNG



TK21 CNG



TK23 CNG



TZ21 CNG



TZ22 CNG

» International standards and approvals

- NGV1 standard
- Products comply with ANSI NGV1
- ISO 14469
- ISO 15500
- ISO 15501
- PED97/23/EC: CE0036
- ECE R110

» Technical Data

1. Pressure range compatible to:
NGV1 P30 (200 bar)
NGV1 P36 (250 bar)
2. Temperature range:
-40 °C up to +85 °C (+120 °C)

» System Overview

Fuelling Nozzles, Service Nozzles, Breakaway Couplings

Fuelling Nozzles				
Type	Car	Car (Italy)	Bus/truck (NGV2*)	Self-Service
TK17 CNG	✓			✓
TK16 CNG	✓			✓
TK10 CNG	✓			
TK4 CNG	✓			
TK4i CNG		✓		
TK1 CNG	✓			
TK26 CNG			✓	✓
TK22 CNG			✓	
TK24 CNG			✓	
Service Nozzles/Defuelling Nozzles				
Type	Discharging of CNG fuel tanks - car	Discharging of CNG fuel tanks - bus/truck	Discharging of trailers	
TK6 CNG	✓			
TK21 CNG		✓		
TK23 CNG			✓	
Breakaway Couplings				
Type	Car (NGV1)	Car (NGV1) - Inline	Bus/truck (NGV2*)	Bus/truck (NGV2*) - Inline
TSA1 CNG	✓			
TSA2 CNG		✓		
TSA5 CNG			✓	
TSA6 CNG				✓

* non standardized denomination for ISO 14469-2

» WEH® Fuelling Technology

WEH has been a pioneer in the field of alternative fuels since 1986. It laid the foundation for the worldwide NGV1 standard by developing a complete range of products for NGV refuelling: from receptacles and check valves in vehicles to fuelling nozzles, filling hoses, breakaway couplings and filters for fuelling stations. The products are ideally suited for self-service operation. Safety, ease of operation and the well executed design of WEH® Products have led to widespread acceptance and customer satisfaction and have been a major step in the development of alternative fuels.

WEH is a global thinking and acting group of companies with more than 150 employees. It has an international sales network and is represented in more than 40 countries worldwide – with products in use all over the world.

Your benefits:

- » Safe and easy operation
- » High reliability
- » Minimum wear
- » Ease of maintenance

» WEH® Fuelling Nozzles for cars

Fuelling Nozzles



» TK17 CNG

The WEH® TK17 CNG Fuelling Nozzle has been designed in the PISTOL GRIP style familiar to all conventional vehicle drivers. Having a similar look and feel, as well as single-handed operation, the nozzle is just as quick and easy to use as common petrol/diesel nozzles.



» TK16 CNG

The WEH® TK16 CNG is very light in weight and therefore easy to operate. The actuation lever is located on the integrated swivel joint making it easy to rotate into the optimum actuating position. The compact actuation lever needs less effort to actuate the nozzle.



» TK10 CNG

The WEH® TK10 CNG features 'push to connect' jaw locking system. The locking sleeve does not have to be pulled back in order to make a connection which means that the connector is very easy to use. The hand grip is available in 45° or 90° configurations.



» TK4 CNG

The WEH® TK4 CNG was developed for fast fill CNG single-hose fuelling of cars. The integrated 'push to connect' feature allows easy operation and makes even difficult-to-access-receptacles easy to refuel due to the extended nozzle design.



» TK4i CNG

The WEH® TK4i CNG was especially designed for the Italian NGV market, enabling to connect to Italian receptacles with a push-pull nozzle. Operation is as easy as for TK4 CNG.

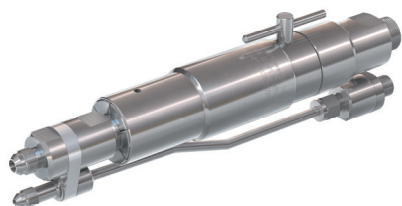


» TK1 CNG

The WEH® TK1 CNG Fuelling Nozzle is best suited for home fill applications. It is specifically designed for time filling of CNG vehicles with small compressors.

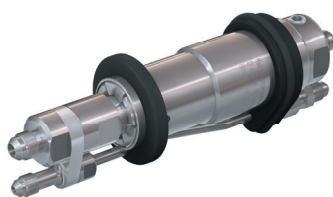
» More WEH® Solutions for cars

Breakaways, Receptacles, Check Valves, Filters



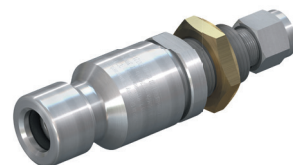
» TSA1 CNG

The WEH® TSA1 CNG offers additional safety for fuelling stations. The breakaway coupling is installed between dispenser and fuelling hose. In the event of accidental deployment, it will separate and protect the dispensing equipment against damage.



» TSA2 CNG

The WEH® TSA2 CNG Inline Breakaway Coupling is installed inbetween the filling and venting hoses. It will also separate, sealing both ends and protect your dispensing equipment against damage in the event of accidental deployment.



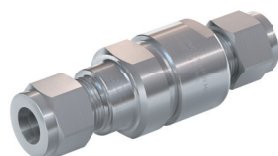
» TN1 CNG

Due to the internal aerodynamic design of the WEH® TN1 CNG receptacle low noise refuelling and maximum flow rates can be achieved. It is very durable, minimizing maintenance and downtime. TN1 CNG is suitable for nozzles with NGV1 standard.



» TS50 CNG

The WEH® TS50 CNG Fuelling System is a CNG conversion kit for quick and easy installation into the vehicle. It is equipped with an integrated TN1 CNG receptacle and an integrated starter cut-off micro switch. TS50 CNG can be installed easily and quickly from the inside or outside of the vehicle.



» TVR1 CNG

The WEH® TVR1 CNG Check Valve is an advanced high-performance check valve for use with natural gas. It is designed in order to minimize the effect that dirt particles have on the sealing components within the unit. Very durable!



» TSF2 CNG Coalescing Filter

The WEH® TSF2 CNG Coalescing Filter reliably removes contaminants such as oil, water and dirt particles which are contained in the gas. The filters are easy to maintain and can be installed onboard vehicles and in fuelling stations at any time.

» WEH® Fuelling Nozzles for buses/trucks

Fuelling Nozzles



» TK26 CNG

Being only half the weight of the previous TK25 CNG version, the WEH® TK26 CNG has the same outstanding features as all Fuelling Nozzles. WEH developed the TK26 CNG specifically for refuelling buses and trucks at self-service stations. The considerably improved ergonomics contribute to the ease of operation. The swivel joint, located centrally at the actuation lever, can be easily turned to the most comfortable operating position, even with semi rigid fuel hoses. Due to its light weight, the nozzle can be easily handled with less effort required for refuelling.



» TK22 CNG

The WEH® TK22 CNG Fuelling Nozzle for refueling buses and trucks can be used wherever the system is pressurized and vented at the fuelling station. The compact design and the unique WEH® Jaw locking mechanism provide a pressure-tight push-pull connection within seconds. The nozzle only has to be placed onto the receptacle and the clamping jaws close. Disconnection is effected by pulling back the grip sleeve.



» TK24 CNG

The WEH® TK24 CNG combines user comfort with maximum convenience. The extended construction of the integrated TK22 CNG fuelling nozzle allows push-pull connections and helps in refuelling difficult-to-access receptacles. The ergonomic design of the handle can help to prevent stresses on the high pressure hose and hose damage due to chafing on the ground. The TK24 CNG is optionally also available with integrated gas recirculation.

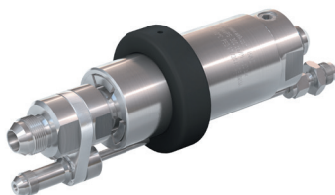
» More WEH® Solutions for buses/trucks

Breakaways, Receptacles, Check Valves, Filters



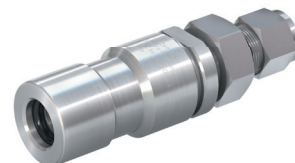
» TSA5 CNG

The WEH® TSA5 CNG offers additional safety for fuelling stations. The breakaway coupling is installed between dispenser and fuelling hose. In the event of accidental deployment, it will separate and protect the dispensing equipment against damage.



» TSA6 CNG

The WEH® TSA6 CNG Inline Breakaway coupling is installed inbetween the filling and venting hoses. It will also separate, sealing both ends and protect your dispensing equipment against damage in the event of accidental deployment.



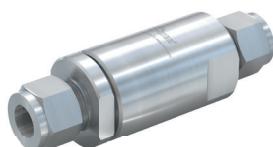
» TN5 CNG

Due to the internal aerodynamic design of the WEH® TN5 CNG Receptacle maximum flow rates can be achieved. It is very durable, minimizing maintenance and downtime. There is no high frequency noise during refuelling with TN5 CNG receptacle.



» TS55 CNG

The WEH® TS55 CNG Fuelling System consists of a fully assembled housing with an integrated large receptacle and enables easy retrofitting of buses and trucks to CNG. Ensuring fast filling and high flow rates, the integrated WEH® TN5 CNG Receptacle features low noise refuelling.



» TVR5 CNG

The WEH® TVR5 CNG Check Valve is most efficient and developed specifically for CNG buses. It is designed from high-grade corrosion-resistant steel in order to minimize the effect that dirt particles have on the sealing components within the unit. Very durable!



» TSF4 CNG

The WEH® TSF4 CNG Filter is designed to capture dirt and gas-borne debris thereby reducing the danger of erosion. The filter can be removed for cleaning purposes without tedious untightening of the media lines.

» WEH® Service Nozzles and more

Service Nozzles, Defuelling Nozzles, Emergency Fuelling Sets



» TK6 CNG

The WEH® TK6 CNG Service Nozzle has been designed for discharging pressure vessels in natural gas vehicles. With the service nozzle placed onto the receptacle, all vessels can be discharged via the receptacle.



» TK21 CNG

The WEH® TK21 CNG Service Nozzle enables discharging of pressurized fuel tanks in CNG buses and trucks. With the service nozzle connected to the receptacle, the tank can be discharged through the lateral media discharge vent.



» TK23 CNG

The WEH® TK23 CNG is designed specifically for evacuating and discharging of cylinder bundles, e.g. on trailers. Connecting and disconnecting of the defuelling nozzle can only occur in depressurized condition.



» TZ21 CNG

This emergency fuelling set consists of a fuelling nozzle and a service nozzle with integrated venting valve connected with a hose. With the WEH® TZ21 CNG the broken down mono-fuelled CNG car can be refuelled with CNG by a bi-fuelled service car.



» TZ22 CNG

With the WEH® TZ22 CNG Emergency Fuelling Set broken down CNG buses or trucks can be refuelled with CNG by a bi-fuelled service car. The fuelling set consists of a fuelling nozzle, a service nozzle and a 2-way ball valve connected with a hose.

» Contact

For questions and further information, please do not hesitate to contact us.

WEH GmbH Gas Technology

Josef-Henle-Str. 1
89257 Illertissen / Germany

Phone: +49 7303 95190-0
Fax: +49 7303 95190-9999

Email: ngvsales@weh.com
www.weh.com