

Type **TK4 CNG**

CNG Fuelling Nozzle

for cars



General

DESCRIPTION



Features

- Compatible with receptacles acc. to NGV1 standard and ISO 14469-1 and 3
- Push-Pull actuation
- Integrated shut-off valve
- Plastic thermal protection
- WEH® Jaw locking mechanism
- Colour coded sliding sleeve (200 bar / 3,000 psi black, 250 bar / 3,600 psi yellow)
- High-grade materials
- Compact design

The TK4 CNG fuelling nozzle is designed specifically for fast filling of vehicles having an NGV1 receptacle at fuelling stations with NGV1 standard and is best suited for this application.

The TK4 CNG is now even easier to operate. The clamping jaws are opened when the nozzle is disconnected and the sliding sleeve need not be pulled back to connect the nozzle. Just push the nozzle straight onto the receptacle and the TK4 CNG jaws clamp tightly. Once the fuelling nozzle is connected, the shut-off valve in the nozzle opens and the pressure-tight connection is established. The extended construction of the fuelling nozzle allows easy refuelling of difficult-to-access receptacles.

Application

Fuelling nozzle for CNG fast filling of cars to be used with WEH® TN1 CNG receptacles acc. to NGV1 standard and ISO 14469-1 and 3.

Operation only by specially trained service personnel. Not for self-service operation!

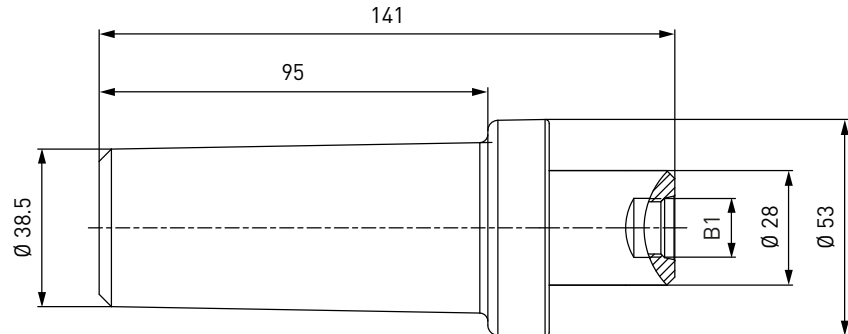
TECHNICAL DATA

Characteristic	Basic version	Options
Nominal bore DN	Depending on design	On request
Pressure range	B200 acc. to ISO 14469-1 (P30 acc. to ANSI NGV1) PN = 200 bar (3,000 psi) PS = 300 bar PT = 450 bar (black) B250 acc. to ISO 14469-3 (P36 acc. to ANSI NGV1) PN = 250 bar (3,600 psi) PS = 350 bar PT = 525 bar (yellow)	
Temperature range	-40 °C up to +85 °C (-40 °F up to +185 °F)	On request
Material	Corrosion resistant	On request
Sealing material	Natural gas compatible	On request
Design	With plastic thermal protection	On request
Weight	Approx. 0.4 kg (0.88 lbs.)	
Registration	PED97/23/EC: CE0036 The products comply with ANSI NGV1.	

Ordering / Accessories

ORDERING | Fuelling nozzle TK4 CNG

approx. dimensions (mm)



Part No.	Description	DN	Pressure (PN)	Inlet B1 (internal thread)
C1-112765	TK4 CNG	8	200 bar / 3,000 psi (black)	UNF 9/16" -18*
C1-112764	TK4 CNG	8	250 bar / 3,600 psi (yellow)	UNF 9/16" -18*
C1-125996	TK4 CNG	8	200 bar / 3,000 psi (black)	UNF 9/16" -18* LH
C1-125997	TK4 CNG	8	200 bar / 3,000 psi (black)	G3/8"

* acc. to SAE J1926

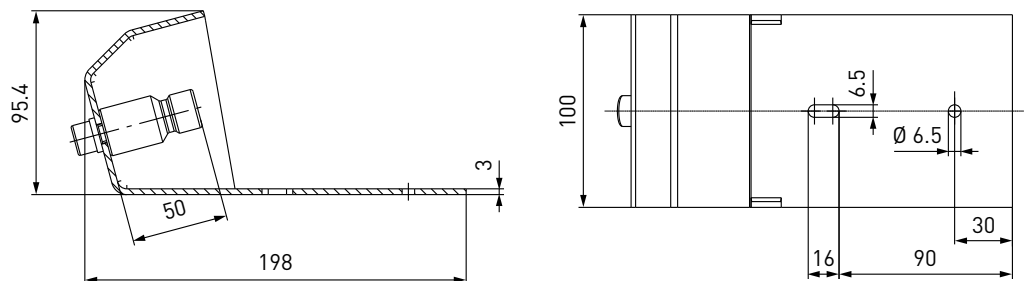
On request inlet port 'B1' is also available with other thread sizes.

ACCESSORIES

The following accessories are available for type TK4 CNG:

Dispenser mounting

Mounting for safe attachment of the fuelling nozzle to the dispenser. Design: Stainless steel



Part No.	Description
C1-100205	Mounting (not switch actuated)

Accessories

Filter TSF1 CNG (40 micron)

We recommend the installation of a type TSF1 CNG filter (see page 90, catalogue no. 15) between the nozzle and the filling hose. The filter protects your system from damage due to dirt ingress.



Part No.	Description	DN	Pressure (PN)	Inlet B1	Outlet B2
C1-94070	TSF1 CNG (CE)	8	250 bar / 3,600 psi	UNF 9/16" -18* internal thread	UNF 9/16" -18* external thread
C1-106854	TSF1 CNG (CE)	8	250 bar / 3,600 psi	UNF 9/16" -18** external thread	UNF 9/16" -18* external thread

* acc. to SAE J1926

** acc. to SAE J514, 37°

Filling hoses

Filling hoses for connecting fuelling nozzle and dispenser, complete with fittings and press-fittings supported by coil spring stubs.



Part No.	Filling hose B1/B2 (internal thread)	Hose length
E68-1031-3000	UNF 9/16" -18*	3 m
E68-1031-4000	UNF 9/16" -18*	4 m
E68-1031-5000	UNF 9/16" -18*	5 m

* acc. to SAE J514, 37°

Fittings

Stainless steel fittings for connecting the media inlet 'B1' to the filling hose.

Part No.	Description	Connection fuelling nozzle	Connection filling hose
W6702	Fitting	UNF 9/16" -18** external thread	UNF 9/16" -18* external thread
W6705	Fitting	UNF 9/16" -18** external thread	UNF 7/16" -20* external thread
W6927	Fitting	UNF 9/16" -18** external thread	UNF 7/8" -14* external thread
E80-561P	Fitting	UNF 9/16" -18** external thread	NPT 1/4" external thread
C1-59695	Fitting	UNF 9/16" -18** external thread LH	UNF 9/16" -18** external thread

* acc. to SAE J514, 37°

** acc. to SAE J1926

Please see page 126 in catalogue no. 15 onwards for a detailed overview on all available fittings.

Accessories

Spare parts

Various parts are available as spares for type TK4 CNG:



Part No.	Description
C1-132266	1 Spare parts set 200 bar / 3,000 psi (black sliding sleeve incl. disk and 3 screws)
C1-132267	1 Spare parts set 250 bar / 3,600 psi (yellow sliding sleeve incl. disk and 3 screws)
E99-44923	Maintenance spray

Other products

OTHER PRODUCTS

You will find more products in our current catalogue no. 15



Further information on our homepage
www.weh.com

» Contacting

For queries and further information, please do not hesitate to contact us.

Manufacturer:

WEH GmbH Gas Technology

Josef-Henle-Str. 1
89257 Illertissen / Germany

Phone: +49 7303 95190-0

Fax: +49 7303 95190-9999

Email: ngvsales@weh.com

www.weh.com