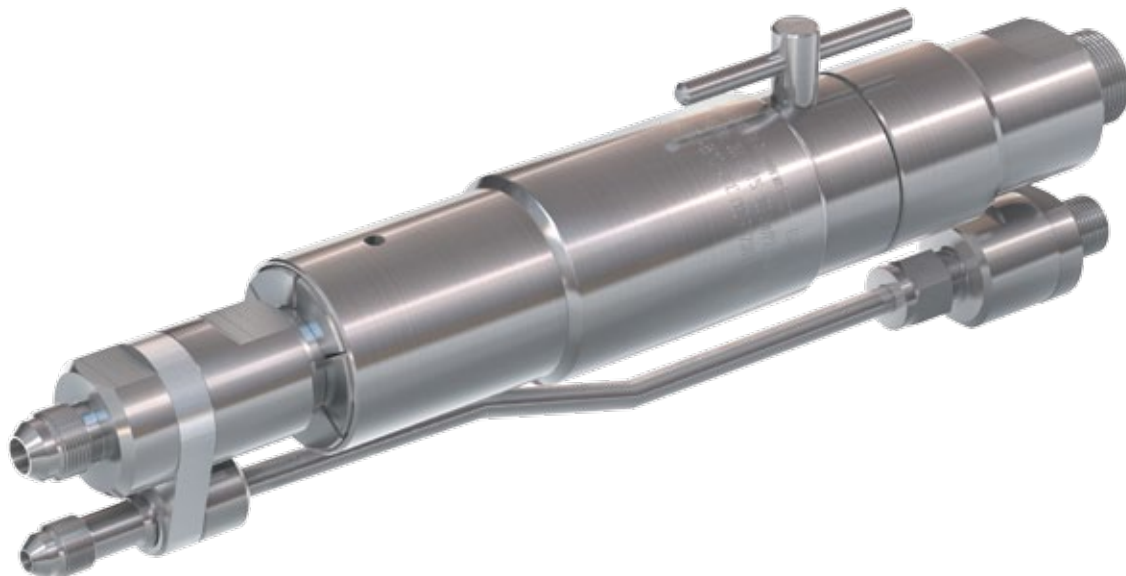


Type **TSA1 CNG**

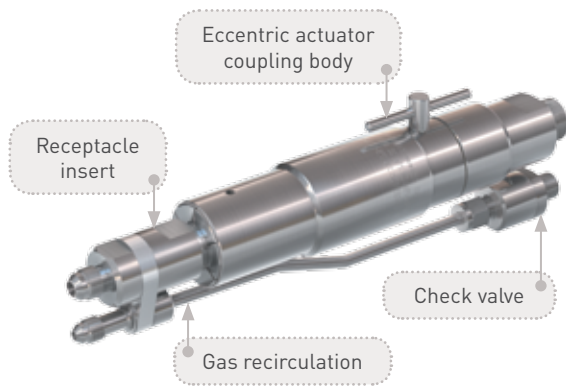
Breakaway Coupling

for car fuelling stations



General

DESCRIPTION



Features

- Re-usable without factory reservicing
- Installation at the dispenser
- Small compact design
- Integrated cleanable filter (40 micron)
- Check valve at venting line
- No additional tool necessary
- Option: without filter; without gas recirculation

The type TSA1 CNG breakaway coupling offers additional safety for your car fuelling station. The breakaway is installed between the dispenser and the filling/venting hose. In the event of accidental deployment, e.g. driving a vehicle from the dispenser with the nozzle remaining in the vehicle fuel port, the coupling will separate the connections between dispenser and hose sealing both ends. This protects largely the receptacle, the fuelling nozzle and the dispenser against damage. The detached coupling can be easily reattached and placed back in service after having been function tested. We recommend to use breakaways with integrated filter. The filter provides clean natural gas and is easy to maintain. Of course we also offer breakaway couplings without filter.

The breakaway device consists of a coupling body, a receptacle insert and a gas recirculation with check valve. The breakaway is also available without gas recirculation.

We also offer complete hose assemblies consisting of a fuelling nozzle, a hose set and a breakaway coupling (for complete hose assemblies see respective fuelling nozzle).

Application

Breakaway coupling for car fuelling stations for installation between the dispenser and the filling/venting hose.

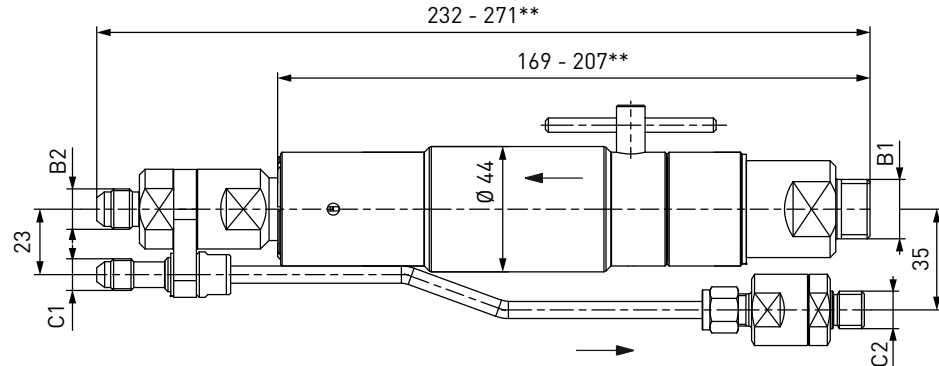
TECHNICAL DATA

Characteristic	Basic version	Options
Nominal bore DN	Max. 8 mm	4 mm (C1-101108), others on request
Pressure range	PN = 200 bar (3,000 psi) PS = 300 bar PT = 450 bar PN = 250 bar (3,600 psi) PS = 350 bar PT = 525 bar	
Temperature range	-40 °C up to +85 °C [-40 °F up to +185 °F]	On request
Breakaway force	300 - 600 N	On request
Material	Corrosion resistant stainless steel, aluminium	On request
Sealing material	Natural gas compatible	On request
Design	With gas recirculation and filter (40 micron)	Without gas recirculation Without filter
Registration	PED97/23/EC: CE0036	

Ordering

ORDERING | Breakaway coupling TSA1 CNG with gas recirculation

approx. dimensions (mm)



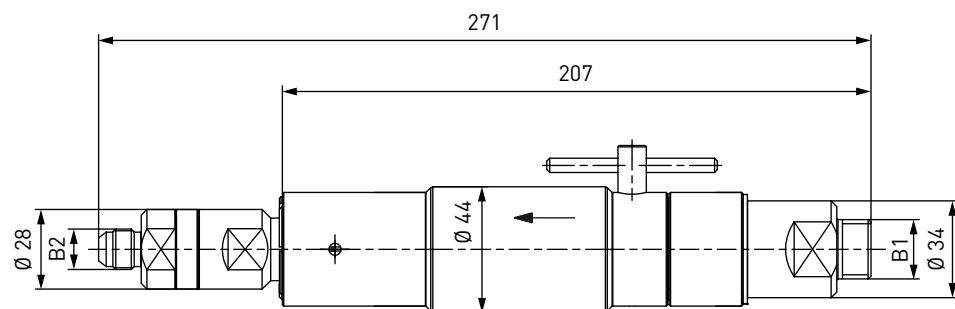
Part No.	Description	Pressure (PN)	B1 (external thread)	B2 (external thread)	C1 (external thread)	C2 (external thread)
C1-17195	TSA1 CNG with filter	200 bar / 3,000 psi	G1/2"	UNF 9/16"-18*	UNF 7/16"-20*	G1/4"
C1-102487	TSA1 CNG with filter	250 bar / 3,600 psi	G1/2"	UNF 9/16"-18*	UNF 7/16"-20*	G1/4"
C1-17196	TSA1 CNG without filter	200 bar / 3,000 psi	G1/2"	UNF 9/16"-18*	UNF 7/16"-20*	G1/4"
C1-101108	TSA1 CNG with filter	200 bar / 3,000 psi	G1/2"	UNF 7/16"-20*	UNF 7/16"-20*	G1/4"

* acc. to SAE J514, 37°

** length depending on type of breakaway coupling

ORDERING | Breakaway coupling TSA1 CNG without gas recirculation

approx. dimensions (mm)



Part No.	Description	Pressure (PN)	B1 (external thread)	B2 (external thread)
C1-17197	TSA1 CNG with filter	200 bar / 3,000 psi	G1/2"	UNF 9/16"-18*

* acc. to SAE J514, 37°

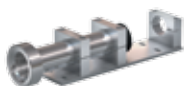
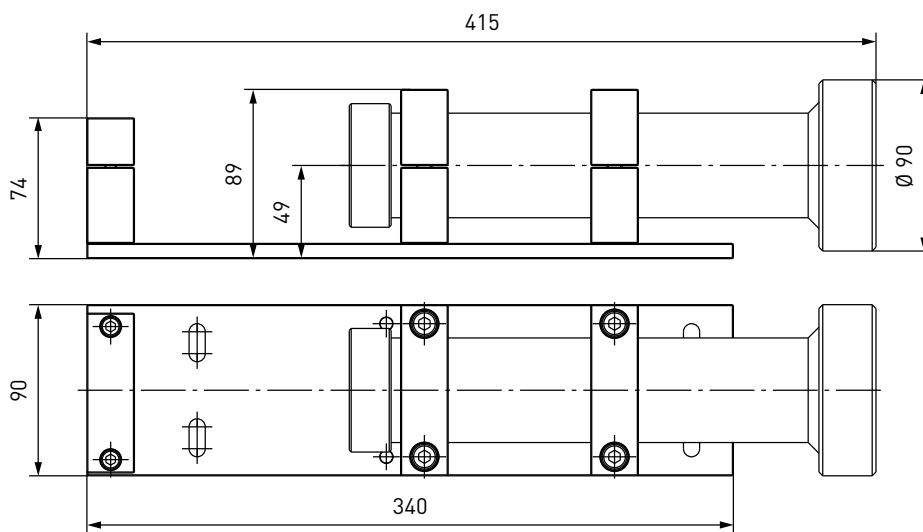
Ordering

ACCESSORIES

The following accessories are available for type TSA1 CNG:

Dispenser mounting for breakaway coupling

The breakaway coupling can also be used with a dispenser mounting. The mounting is firmly attached to the dispenser. The integrated guide tube provides a straight pull-off force. The dispenser mounting can be used instead of a return pulley (hose pulley).



Part No.	Description
C1-69275	Mounting for TSA1 CNG

Return pulley (hose pulley)

Return pulley for breakaway couplings to be used at CNG fuelling stations. For single and twin hoses (permanently bonded).



Part No.	Description
C1-46287	Return pulley (hose pulley)

Filling and venting hoses

Please see page 122 in catalogue no. 15 or the corresponding fuelling nozzles for filling and venting hoses suitable for the type TSA1 CNG breakaway coupling.

Ordering

Fittings

Stainless steel fittings for connecting the media inlet 'B' to the filling hose or the gas recirculation inlet 'C' to the venting hose.

Part No.	Description	Connection breakaway	Connection filling hose
C1-79538	Fitting	UNF 9/16"-18* internal thread	UNF 9/16"-18** internal thread
E80-647P	Fitting	UNF 9/16"-18* internal thread	UNF 7/8"-14* external thread
E80-60018	Fitting	UNF 9/16"-18* external thread	G3/8" external thread

* acc. to SAE J514, 37°

** acc. to SAE J1926

Please see page 126 in catalogue no. 15 onwards for a detailed overview on all available fittings.

Spare parts

Various parts are available as spares for type TSA1 CNG:



Part No.	Description
W56149	Receptacle insert for type TSA1 CNG with gas recirculation
W60006	Receptacle insert for type TSA1 CNG without gas recirculation
E69-9061	Wire filter insert 40 micron (incl. spring and o-ring)
E59-46414	Copper disc for G1/4" external thread (port C2)
E59-45950	Copper disc for G1/2" external thread (port B1)

Other products

OTHER PRODUCTS

You will find more products in our current catalogue no. 15



Further information on our homepage
www.weh.com

© All rights reserved, WEH GmbH 2013. Any unauthorized use is strictly forbidden. Subject to alteration. No liability will be assumed for any content. Herewith previous versions are no longer valid.

» Contacting

For queries and further information, please do not hesitate to contact us.

Manufacturer:

WEH GmbH Gas Technology

Josef-Henle-Str. 1
89257 Illertissen / Germany

Phone: +49 7303 95190-0

Fax: +49 7303 95190-9999

eMail: ngvsales@weh.com

www.weh.com