

# Type **TN1 CNG**

## Receptacle

for refuelling of cars with CNG



**General**

**DESCRIPTION**



**Features**

- Compatible with fuelling nozzles acc. to NGV1 standard and ISO 14469-1 and 3
- Low-noise refuelling
- Integrated self-cleaning particle filter (40 micron)
- Integrated high-flow check valve
- Sealing-friendly design
- Coding for pressure range / gas type

The WEH® TN1 CNG receptacle is designed specifically for car refuelling. Due to the internal aerodynamic design the TN1 CNG receptacle gives low noise (no high frequency whistle) combined with maximum flow rate and fast filling. The receptacle is a very durable unit, minimizing maintenance and down-time. The type TN1 CNG also has an integrated check valve system which is designed to minimize the effect that dirt particles have on the sealing components within the receptacle. The TN1 CNG receptacle is equipped with a coding for pressure range and gas type.

The WEH® TN1 CNG receptacle works best with WEH® Fuelling nozzles. We recommend the fuelling nozzles type TK17 CNG, TK16 CNG, TK10 CNG, TK1 CNG and TK4 CNG.

**Enhanced safety by integrating a dirt particle filter**

Using an integrated particle filter avoids dirt ingress and therefore leakage from the receptacle which gives enhanced safety and reliability - essential features for the volatile nature of CNG products.



**Application**

Receptacle for refuelling of cars with CNG to be used with WEH® Fuelling nozzles acc. to NGV1 Standard and ISO 14469-1 and 3. Only use filters with ECE approval for fitment in vehicles!

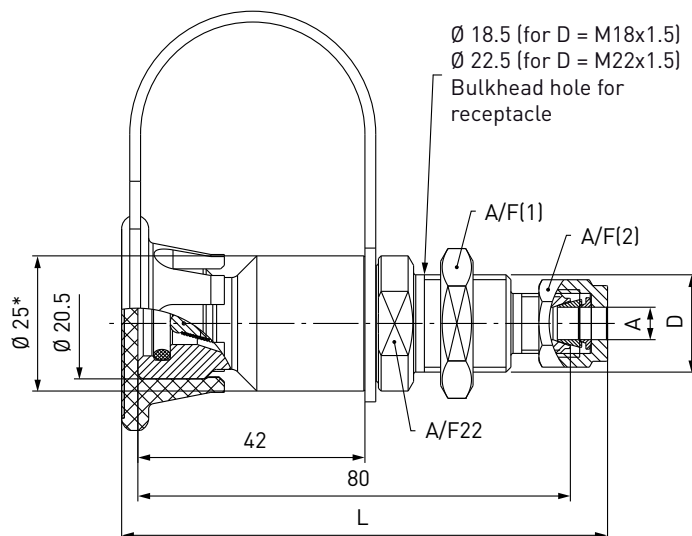
**TECHNICAL DATA**

Characteristic	Basic version	Options
Nominal bore DN	Depending on design	On request
Pressure range	PN = 200 bar (3,000 psi)   PS = 260 bar   PT = 390 bar (ECE) PN = 250 bar (3,600 psi)   PS = 315 bar   PT = 475 bar (CE)	
Temperature range	-40 °C up to +120 °C (-40 °F up to +248 °F)	On request
Material	Corrosion resistant	On request
Sealing material	Natural gas compatible	On request
Design	With protection cap, integrated particle filter (40 micron) and fittings (only for receptacles with tube fitting)	Without integrated particle filter
Registration	E1 110R-000001-01 (ECE) PED97/23/EC: CE0036 (CE)	

**Ordering**

**ORDERING** | Receptacle TN1 CNG with tube fitting and filter (40 micron)

approx. dimensions (mm)



Part No.	Description	DN**	Pressure (PN)	Connection A***	L	D	A/F(1)	A/F(2)
<b>C1-99331</b>	TN1 CNG (ECE)	5	200 bar / 3,000 psi	Tube Ø 6	90	M18x1.5	24	14
<b>C1-105789</b>	TN1 CNG (ECE)	5	200 bar / 3,000 psi	Tube Ø 1/4"	90	M18x1.5	24	14
<b>C1-102542*</b>	TN1 CNG (CE)	5	250 bar / 3,600 psi	Tube Ø 1/4"	90	M18x1.5	24	14
<b>C1-106400</b>	TN1 CNG (ECE)	6	200 bar / 3,000 psi	Tube Ø 8	90	M18x1.5	24	16
<b>C1-103611</b>	TN1 CNG (ECE)	6	200 bar / 3,000 psi	Tube Ø 3/8"	90	M18x1.5	24	17.4
<b>C1-102579*</b>	TN1 CNG (CE)	6	250 bar / 3,600 psi	Tube Ø 3/8"	90	M18x1.5	24	17.4
<b>C1-106401</b>	TN1 CNG (ECE)	6	200 bar / 3,000 psi	Tube Ø 10	91	M18x1.5	24	19
<b>C1-105939</b>	TN1 CNG (ECE)	6	200 bar / 3,000 psi	Tube Ø 12	92	M22x1.5	27	22
<b>C1-106402</b>	TN1 CNG (ECE)	6	200 bar / 3,000 psi	Tube Ø 1/2"	94	M22x1.5	27	22
<b>C1-102580*</b>	TN1 CNG (CE)	6	250 bar / 3,600 psi	Tube Ø 1/2"	94	M22x1.5	27	22

\* Different diameter (Ø 24 mm) due to pressure range coding

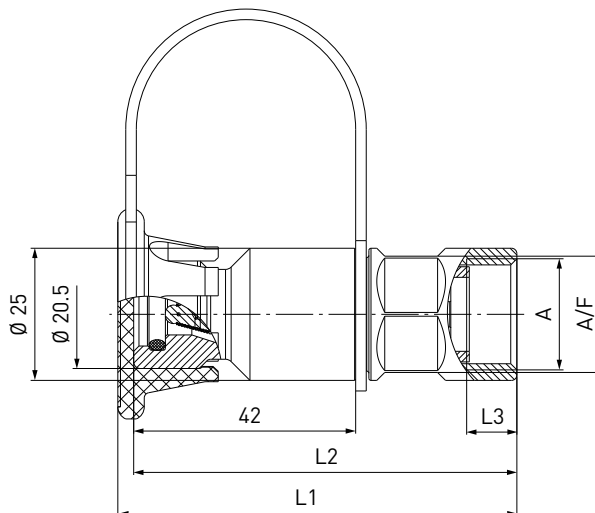
\*\* depending on inner diameter of tube

\*\*\* double ferrule fitting

**Ordering**

**ORDERING** | Receptacle TN1 CNG with internal thread and filter (40 micron)

approx. dimensions (mm)

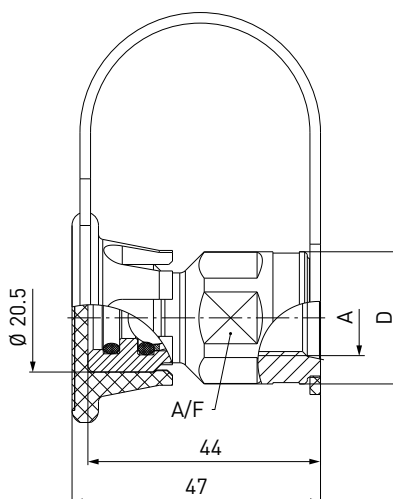


Part No.	Description	DN	Pressure (PN)	Connection A (internal thread)	L1	L2	L3	A/F
<b>C1-92149</b>	TN1 CNG (ECE)	5	200 bar / 3,000 psi	G1/2"	75.5	72.5	9.5	22
<b>C1-101953</b>	TN1 CNG (ECE)	5	200 bar / 3,000 psi	UNF 9/16"-18*	80	77	12.7	23

\* acc. to SAE J1926

**ORDERING** | Receptacle TN1 CNG with internal thread (without filter)

approx. dimensions (mm)



Part No.	Description	DN	Pressure (PN)	Connection A (internal thread)	D	A/F
<b>C1-101122</b>	TN1 CNG (ECE)	6	200 bar / 3,000 psi	UNF 9/16"-18*	25	23
<b>C1-33505</b>	TN1 CNG (CE)	6	250 bar / 3,600 psi	UNF 9/16"-18*	24	22

\* acc. to SAE J1926

Other connection sizes on request.

## Ordering

### SPARE PARTS

Various parts are available as spares for type TN1 CNG:

#### Protection Cap

Protection cap with a strap to protect the type TN1 CNG receptacle from dirt ingress.



Part No.	Description
C1-68966	Protection cap

## Other products

### OTHER PRODUCTS

You will find more products in our current catalogue no. 15



Further information on our homepage  
[www.weh.com](http://www.weh.com)

#### » Contacting

For queries and further information, please do not hesitate to contact us.

*Manufacturer:*

**WEH GmbH Gas Technology**

Josef-Henle-Str. 1  
89257 Illertissen / Germany

Phone: +49 7303 95190-0

Fax: +49 7303 95190-9999

eMail: [ngvsales@weh.com](mailto:ngvsales@weh.com)

[www.weh.com](http://www.weh.com)